



www.santos.fr

COLD DRINK Dispenser #34

Dispenses all kind of beverage such as fruit punch, sangria, lemonades, iced tea or fruit juice...



Internationally patented models

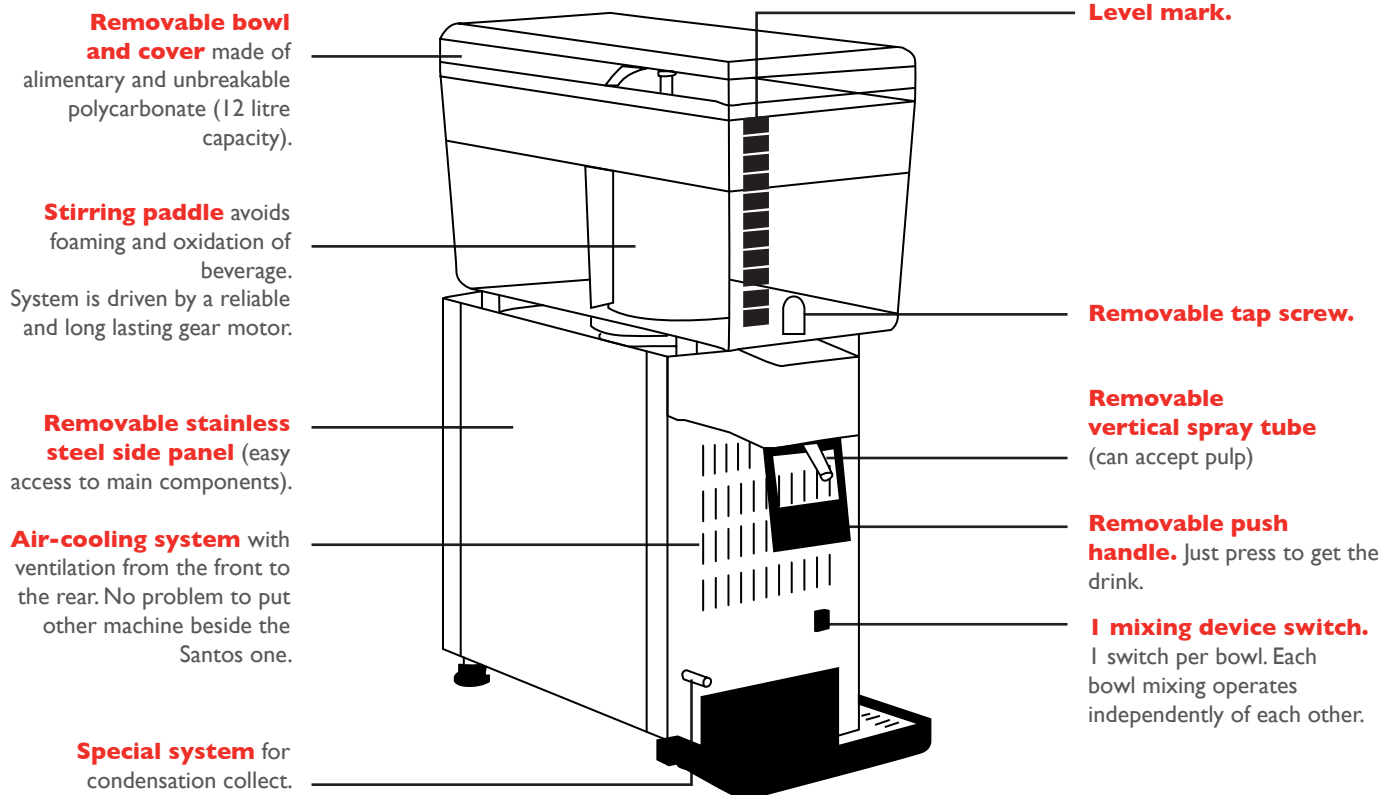




COLD DRINK

POWERFUL, EFFICIENT, DURABLE

The ideal appliance for dispensing all kind of cold beverage such as fruit juices (with pulp or not), sangria, lemonades, water, iced tea, iced coffee or milk, premixed drinks from concentrate or powder...Dedicated to bars, hotels, restaurants, institutions, fast-foods, pizzerias, snack shops or sandwich bars... Easy to use: just press the glass or the jug against the tap to get the drink.



A LARGE RANGE OF DISPENSERS AVAILABLE



34 – 1 (single bowl)
12 liter capacity



34 – 2 (twin bowl)
2 x 12 liter capacity



34 – 3 (triple bowl)
3 x 12 liter capacity

Dispenser #34

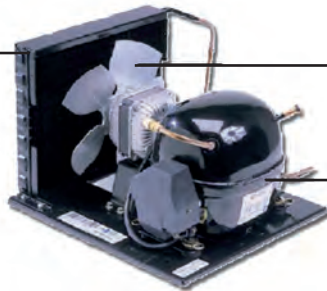


RELIABLE AND PERFORMING REFRIGERATION SYSTEM

Wide air-cooling condenser
to continuously chill the drinks



Adjustable thermostat (one for each bowl) according to local climate conditions and required drinks temperature



Specific fan for better efficiency

High pressure hermetically sealed compressor. High quality and long lasting compressor designed for **tropical countries. Very silent, R134a fluid**

TECHNICAL SPECIFICATIONS - 3 models available in different voltages



Motor - 34-1

160W – 1/5 HP
110-120V – 60 Hz- CE
220-240V – 50/60 Hz – CE
R134A Fluid Charge: 60 g

Motor - 34-2

260 W – 1/3 HP
110-120V – 60 Hz- CE
220-240V – 50/60 Hz – CE
R134A Fluid Charge: 139 g

Motor - 34-3

330W – 3/7 HP
110-120V – 60 Hz- CE
220-240V – 50/60 Hz – CE
R134A Fluid Charge: 200 g



Weight - 34-1

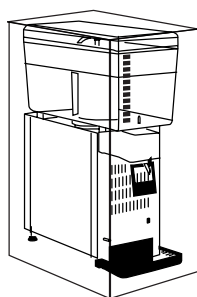
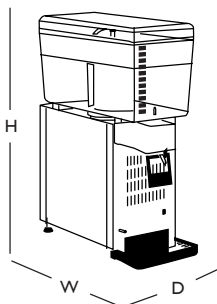
Net: 16 kg – 35 lbs
Shipping: 17 kg – 38 lbs

Weight - 34-2

Net: 23.5 kg – 52 lbs
Shipping: 25.5 kg – 56 lbs

Weight - 34-3

Net: 30.5 kg – 71 lbs
Shipping: 34.5 kg – 76 lbs



34-1

APPLIANCE
W: 190 mm / 7.5"
D: 430 mm / 17"
H: 545 mm / 21"

SHIPPING BOX
W: 270 mm / 10.5"
D: 530 mm / 21"
H: 660 mm / 26"

34-2

APPLIANCE
W: 380 mm / 15"
D: 430 mm / 17"
H: 545 mm / 21"

SHIPPING BOX
W: 460 mm / 18"
D: 535 mm / 21"
H: 660 mm / 26"

34-3

APPLIANCE
W: 570 mm / 22.5"
D: 430 mm / 17"
H: 545 mm / 21"

SHIPPING BOX
W: 650 mm / 25.5"
D: 540 mm / 21"
H: 680 mm / 26.5"

SAFETY, STANDARDS, HYGIENE

In accordance with the following regulations

- Machinery directive 2006/42/EC
- Electromagnetic compatibility 2004/108/EC
- "Low voltage" directive 2006/95/EC
- Regulation 1935/2004/EC (contact with food)
- RoHS directive 2011/65/EC

Harmonized European standards

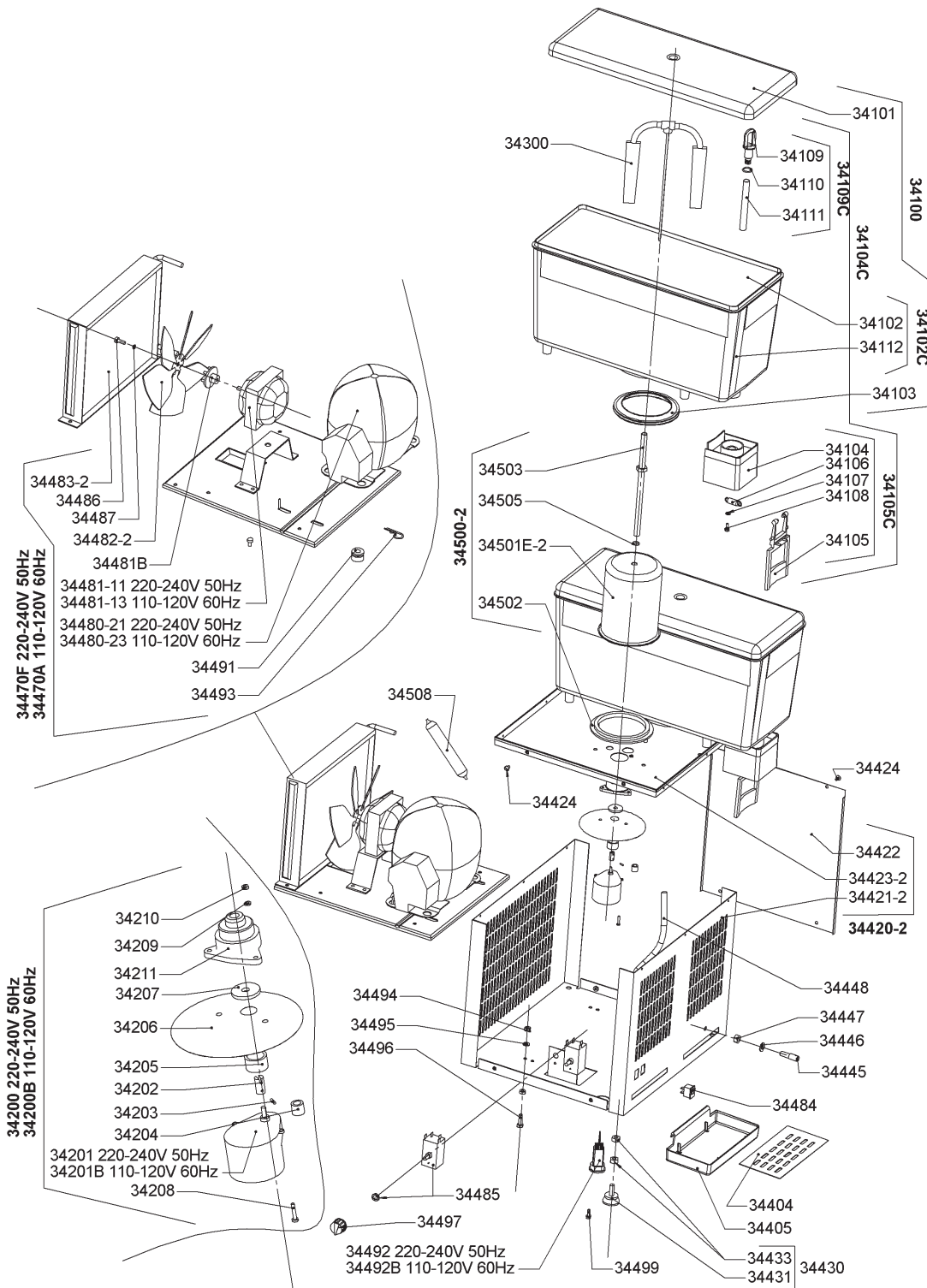
- EN ISO 12100-1 and 2:2004 – EN 60204-1:2006
- EN 60335-2-64:2004 Commercial electric kitchen machines
- CE (Europe)

Thermal safety

- Overload protection integrated in compressor

Hygiene

- All the parts in contact with beverage are made of alimentary materials and are removable without any tool.



SANTOS

140-150 Avenue Roger Salengro BP 80 067 – 69511 Vaulx-en-velin Cedex (Lyon) – FRANCE

Tel. +33 4 72 37 35 29 – Fax. +33 4 78 26 58 21 – **Website:** www.santos.fr – **Email:** santos@santos.fr

Follow us on #SantosAddict social networks   